

QUAIL CREEK POTTERY & SCULPTURE CLUB

BEGINNER PROJECT IDEAS

- Trapped Air for Sculptures
- Slump/Hump Molds
 - Slump Molding
 - Deep Slump Mold
 - Slump Mold Serving Tray
 - GR Form Hump Mold
- Coil Bowl / Pot

Trapped Air Technique for Orbs, Sculptures

1. Take an approximately 2lb ball of clay and shape it into an oval/egg.
2. With your left hand pull out the left/front of the oval for the head.
3. With your right hand pull out the right/tail of egg for the tail
4. Fine tune the head and tail to desired shapes with your fingers.



5. With your Pin Tool, on the underside of the bird, draw a line from neck to tail.
6. With your Pin Tool, draw 3 reference lines across the vertical line.
7. With your Fettling Knife cut the bird open, and spread open, neck to tail.



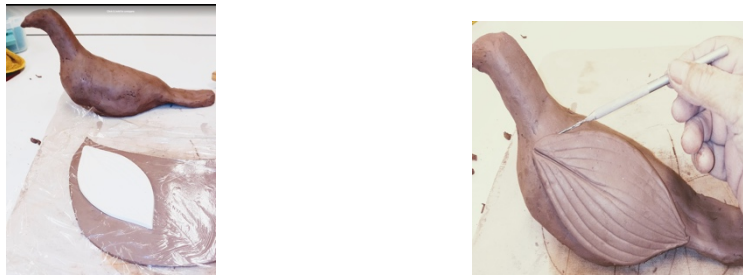
8. With your Pin Tool, draw a reference line, 1/2" in from the edge to define the scooping out space.
9. Using the large loop tool scooper, hollow out inside the reference lines. Hollow out to 1/2" thick walls. Use Pin Tool to measure.



10. Using the Reference Lines to line up the 2 sides, close the form up, squeezing very gently so not to deform the shape. Lightly seal the seam with your fingers
11. Use a rubber rib, moving back and forth across the seam to firmly attach and smooth out the seam.



12. Prepare a flat slab. Select a Leaf form or a cookie cutter to cut out the wings. Use Saran Wrap on the clay to keep the cutter clean and have rounded edges. Lightly press the wing onto the bird and outline placement with pin tool.



13. Slip and Score the wing area on the bird and the wing cutout.
14. Poke holes into the body where the wings attach to vent any air spaces.
15. Attach Wing.



16. Select a feather silicone form and make feathers for the tail.
17. Attach feathers to the tail with Slip and Scoring.



□

Slump/Hump Molds from Slabs

The Club has molds of wood, bisqueware or plasters. Plaster molds are easily damaged so no sharp metal should be used with them. Although these molds do usually release your piece when dried, ***it is advisable to also use cornstarch on the inside of the mold or on the surface of your slab*** to better release the piece.

Hump Molds are **solid**, and the clay slab is draped over the top, like a “hump”. They are very easy to make but come with a downside. As the clay dries on the hump, it shrinks. As it is sitting on a solid mold there is no place to shrink to, so it sticks to the mold. ***Hump forms must be removed from the mold as soon as they are medium leather hard and can keep their shape otherwise, they will stick to the sides.***

Slump Molds are **hollow**, the clay is draped inside the mold. Larger molds are difficult to fit the slab smoothly into, darts can be cut in the clay to make the fit easier. As slump molds dry the clay pulls away from the walls, easily releasing the piece. You can leave your piece in the mold as you texture or decorate the inside.



Plaster Slump
Hollow Inside

Plaster Hump
Solid Shape



Wood Hump

Slump Mold

Supplies: Pin tool, rib, bevel cutter, roller, paint brush, templates, sponge, Clay, Texture tools, Slip, Cookie Cutter or Press Molds.

1. Select a Bisque or Plaster Mold from our equipment shelves.



2. Use the Slab Roller to roll out a circular slab from a 2" block:
3. Pound your square into the basic circle shape first.
4. The final rolled thickness should be between 0.25" - 0.5".
5. Slab should be about 1/3 bigger than the diameter of your mold.
6. Rotate/Flip the slab during the rolling to get the right shape.



7. Transfer the slab to your work cloth. Use a hard rib to compress the slab. Pull the rib both horizontally and vertically several times over the entire surface. Turn slab over and repeat for the back side of the slab.
8. Lay your mold, upside down on the slab. Cut out the form, allowing an extra 2" all around.



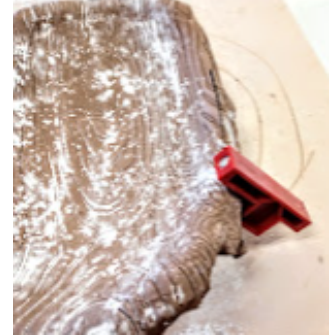
9. Brush Cornstarch liberally inside the mold and on the slab.
10. Carefully pick up your cutout slab and gently drop into the mold. Lift up and tap the mold on the table several times to settle the clay into the mold.





11. Use your Pin Tool or knife to cut off the excess clay from the mold. Cut loosely, leaving about 1/2" extra on the edges.

12. Use the Bevel Cutter to cut a smooth top edge. Hold the cutter against the mold while dragging the wire around the piece. Try to keep the wire horizontal.



13. Use a damp sponge to lightly compress the clay into the mold.

14. Place the piece under fan for 10 minutes to release the form

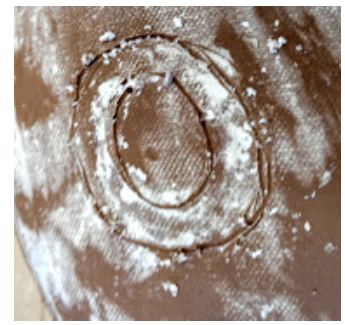


15. Make the foot. Select the 2nd and 3rd smallest rings from the ring cutout tin.



16. Place the rings on your saved raw slab. Center the smaller ring in the larger one. Press down on the rings with a small ware board or paddle to evenly press into the clay. Cut off the excess clay around the rings and extract the circle foot.

17. Find the middle of the bottom of your piece and lightly set the ring foot around it. With your pin tool etch a line around the outer and inner edges to define the area to score and slip. Score and Slip the etched circle on the bottom and the bottom of the foot ring with your serrated rib, attach the foot, etch your name.



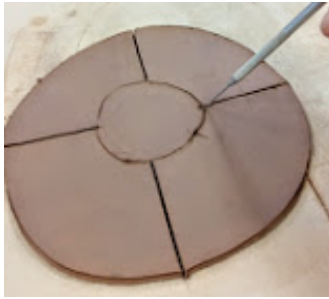
18. Fill out your worksheet. Wrap in plastic. Put on drying rack with your cloths pin in front.

19. Leave covered for 2- 3 days. Then loosely cover for 2-3 days. Then completely uncover and update the worksheet with this date. Check 1 week later. If dry and warm to the touch, move to the Bisque Fire shelf.

Deep Slump Mold

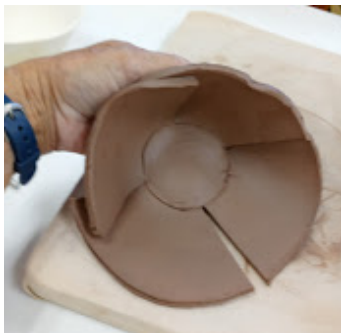
Follow steps 1-7 in the previous slump mold exercise

1. Lay your mold, upside down on the slab. Cut out the form, allowing an extra 3" all around.



2. Cut 4 narrow darts in your prepared circular slab, do not cut into the bottom center area.

3. To aid in stopping the clay from sticking to the form, dust the form and the clay with cornstarch.



4. Fold the clay circle into the inside shape of the mold, overlapping the dart areas. Drop this folded shape into the bowl. Adjust the sides to closely fit the mold.

5. Using your fettling knife or paring knife or pin tool, go to each dart and cut off the excess clay. Leave about 3/8" seam. If you cut too much, you can press in extra clay pieces. With fingers squeeze the seam edges flat.



6. Score and Slip the seams together, try not to get slip onto the clay form/bowl, this would cause your clay to stick to the bowl.





7. Use the wood ball, sponge, roller, fingers etc. to smooth the seams into the mold until the inside is completely smooth.

8. Rough cut off the excess clay from the rim with a knife or pin tool

leaving at least 1/2" extra so you can cut a smooth edge in the next step.



10. Use the wire bevel cutter to do the final edge cut. Position the wire horizontal to the top of the rim and pushing the cutter against the side of the bowl, pull the wire around the top.



- 12. Use a sponge and soft ribs to smooth the bowl interior
- 13. Decorate the inner bowl. Lace, balls, stamps, appliques etc. Let dry for 30 min to allow the bowl to shrink/release from the form. Flip upside down, gently shake, form should release. Holding lightly, use metal rib or other tools to clean up the outside dart edges. Do this gently as bowl may deform.



- 14. Flip form out of the mold, upside down. Make a foot (coil, ring cutter, solid disk) and attach with Score and Slip to the bottom.



- 15. Engrave your initials on the bottom with your Pin Tool.
- 16. Fill out your Work Sheet. Place it on an appropriately sized ware board, wrap tightly in plastic, put on the drying shelves. Pick a shelf appropriately sized for the size of your piece. After 3-5 days, loosen the plastic to let air in.
- 17. After another 3-5 days take the plastic off. Note this date on the work sheet as the "Uncovered Date".
- 18. 3-5 days uncovered, check dryness by color of the clay and warmth of the clay. Hold piece to your cheek, should be warm, not cold. Place directly on the Bisque Kiln shelves (green signs), no wood board, when dry.

Slump Mold Serving Tray

1. Select a Tray Mold from our selection of bisque and plaster molds.
2. Roll out a rectangular slab about 6" wider and 4" longer than the mold.
3. Compress your slab, both directions, both sides
4. Place your mold upside down on the clay and cut around it, 2" from the edge.
5. Put the slab into the mold. Cut off any excess clay from the sides down to about 1/2" from the edges. Cover your excess clay with plastic.
6. Press the clay into the mold with a sponge or soft rib. Fingers leave marks!
7. Let clay dry to soft leather hard, point where knife does not drag when pulling through the slab. You can put by the fans.
8. While tray is drying, cut 1/2" wide long strips from your remaining clay. Cut enough to go around the top of your tray. Pieces can be joined if not long enough.
9. Use a texture roller to decorate the strip.
10. When your tray has firmed up, use your Bevel Cutter Wire, held horizontal against the upper rim, and slide it around the rim to cut off the excess 1/2" of clay at the edges.
11. Score and Slip the decorated strips.
12. Carefully attach the strips to the tray.
13. With your remaining clay slab, roll out a 1/2" thick coil.
14. Shape this coil into 2 handles.
15. Remove your tray from the mold. Score and slip the handles and tray, attach the handles at each end.
16. Put your initials on the bottom
17. Fill out your worksheet
18. Place your piece on a ware board, wrap tightly in plastic, attach clothespin with your name on it, and place on the drying racks.
19. Loosen plastic after 3 days. Remove plastic after 3 days (update worksheet), dry for a week.



GR Form with Rim Hump Mold

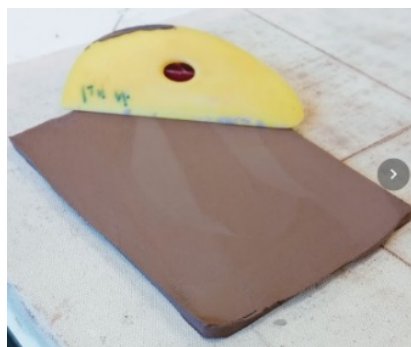
1. Select a wood form from the GR Forms Rack.



2. Select a GR Form Rim Template to match your form (1 size bigger)



3. Prepare your slab for cutting the template.



Roll out a slab to match the Rim Template.

Compress the slab with the rubber rib.

Roll on a texture or design.

4. Place your Rim Template on the textured slab, conserve space. Using your Pin Tool carefully cut around the edge of the Template.



5. Place a piece of plastic over your cutout form. Using your fingers smooth the edges while pulling the plastic to avoid wrinkles. Use one finger to carefully smooth all the indents on the rim.



6. Take a piece of heavy foam from the GR Forms Rack and place it on the table and place your Rim Slab on the foam.





Place the wood form, bottom side down, in the center of the clay



Press down firmly with hands to push the form into the foam. Hold for a few seconds.



Release your fingers, piece will pop up from the foam. Place it on a ware board, let dry under the fans for 3 minutes.

7. Carefully remove the wood form.

8. Clean up any spurs or rough edges with plastic wrap, sponge or fingers



Coil Bowl

Rolling out the Coils for the sides:



Using your palms and fingers to roll out a 1/2" coil. Do a complete roll with each turn, slide your hands to the ends of the coils to thin out and lengthen.

Making the Coil Pot

Making a Coil Pot 1st Steps Hand Building Technique

Start with a base about 1/2" thick in the shape you would like.



Score/Slip 1st ring to base, score/slip 2nd ring to 1st.



With fingers smooth 1st 2 rows together, add the next rings



Note. Positioning the coil to either the outer or inner edge of the previous coil will shape your pot.

With rubber or metal rib smooth inside and outside



**Use wooden slat or
mallet to compact
and smooth.**



Clean inside with cloth or sponge